

Dilkeşhaveran Şarkı
BİR MATEMİ FİRKAT TUTUYOR GİRYELİ GÖNLÜM

"duye R

dilkeşhaveran

Beste: İsak Varon
Bölle: Yenisehirlî Hüseyin Amini Bey

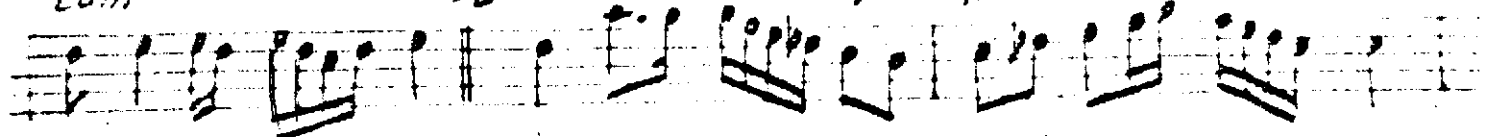
BİR ma te mi FIR Köt tu tu yor

gİR ye Li gön



Lüm

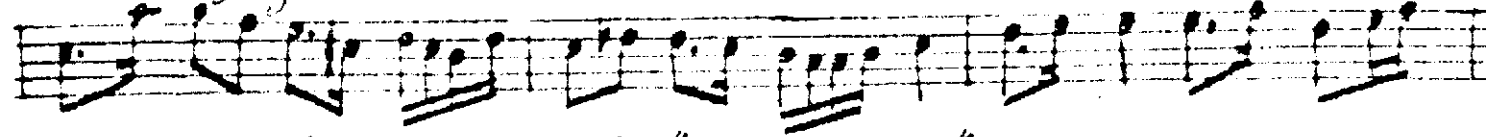
Bil di se nin aş Kın la de Rin



sev megi gön

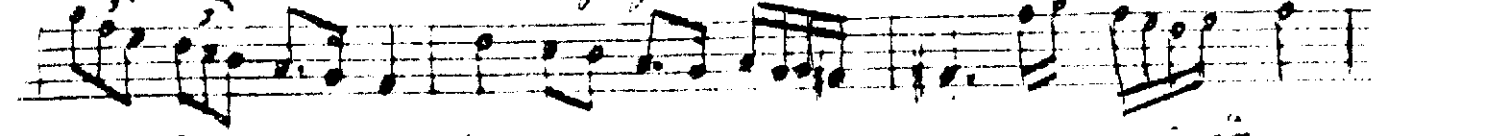
Lüm

Bil di se nin aş



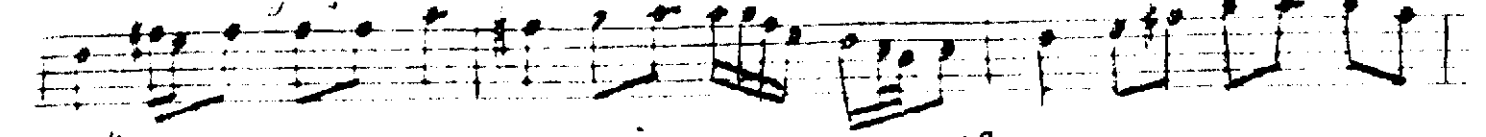
nın la de Rin sev megi gön

Lüm



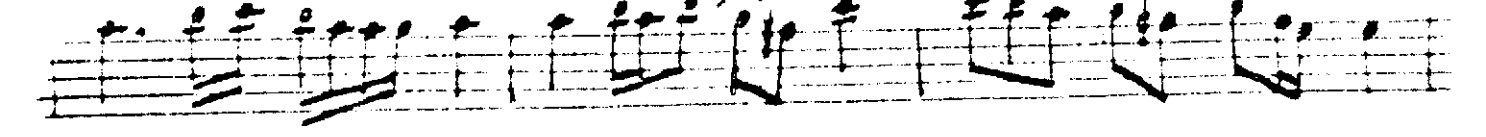
sen siz ge çe cök se Bu a cı

na Le i öm



Rüm

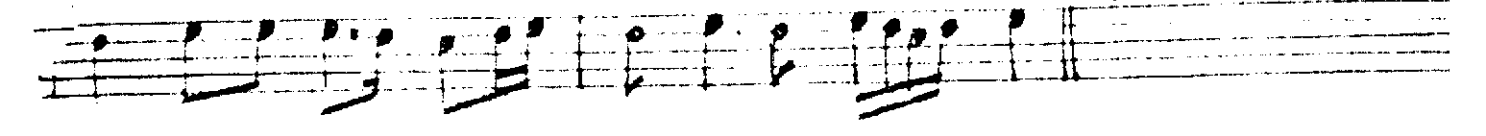
sen siz ge çe cök se Bu a cı



na Le i öm

Rüm

%



Bir zerk bilecek uşuna can ver megi gön lüm